

# LOS ANGELES POLICE DEPARTMENT

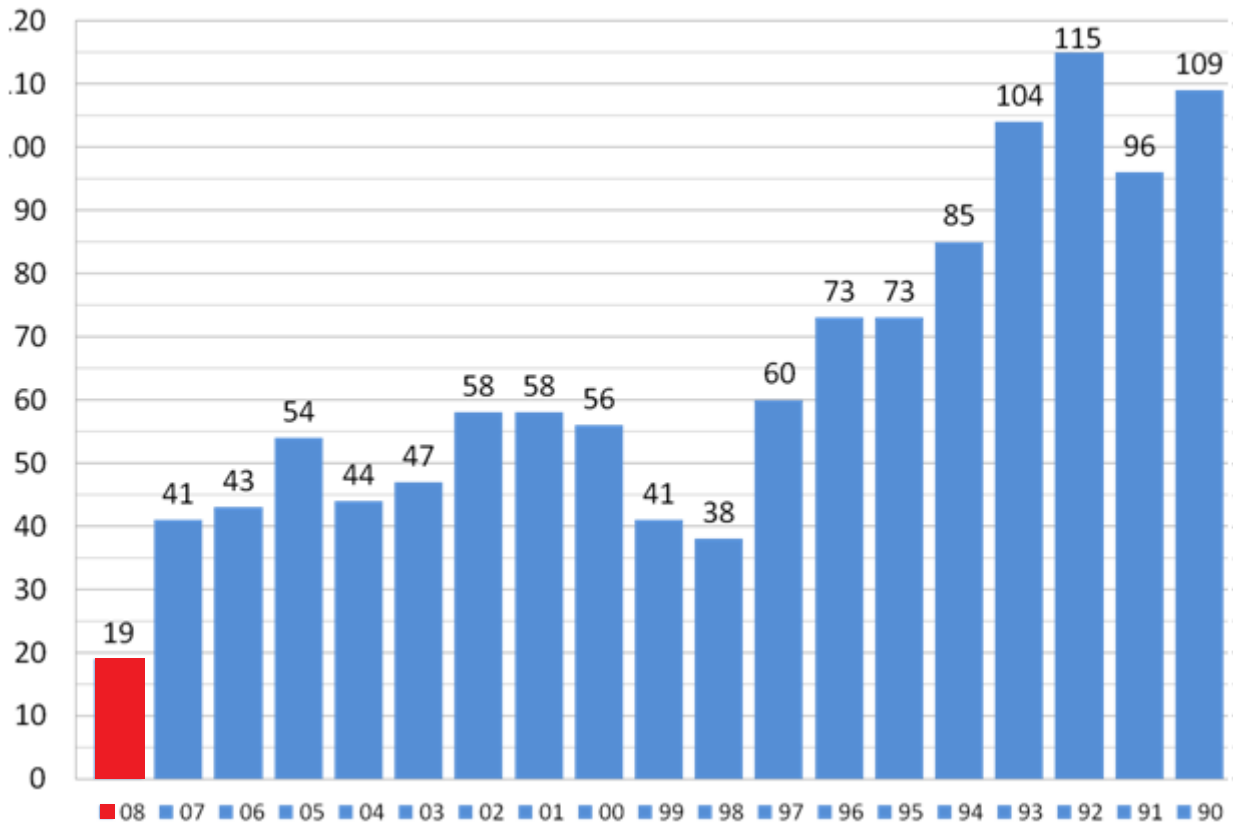


## STATE OF THE CITY

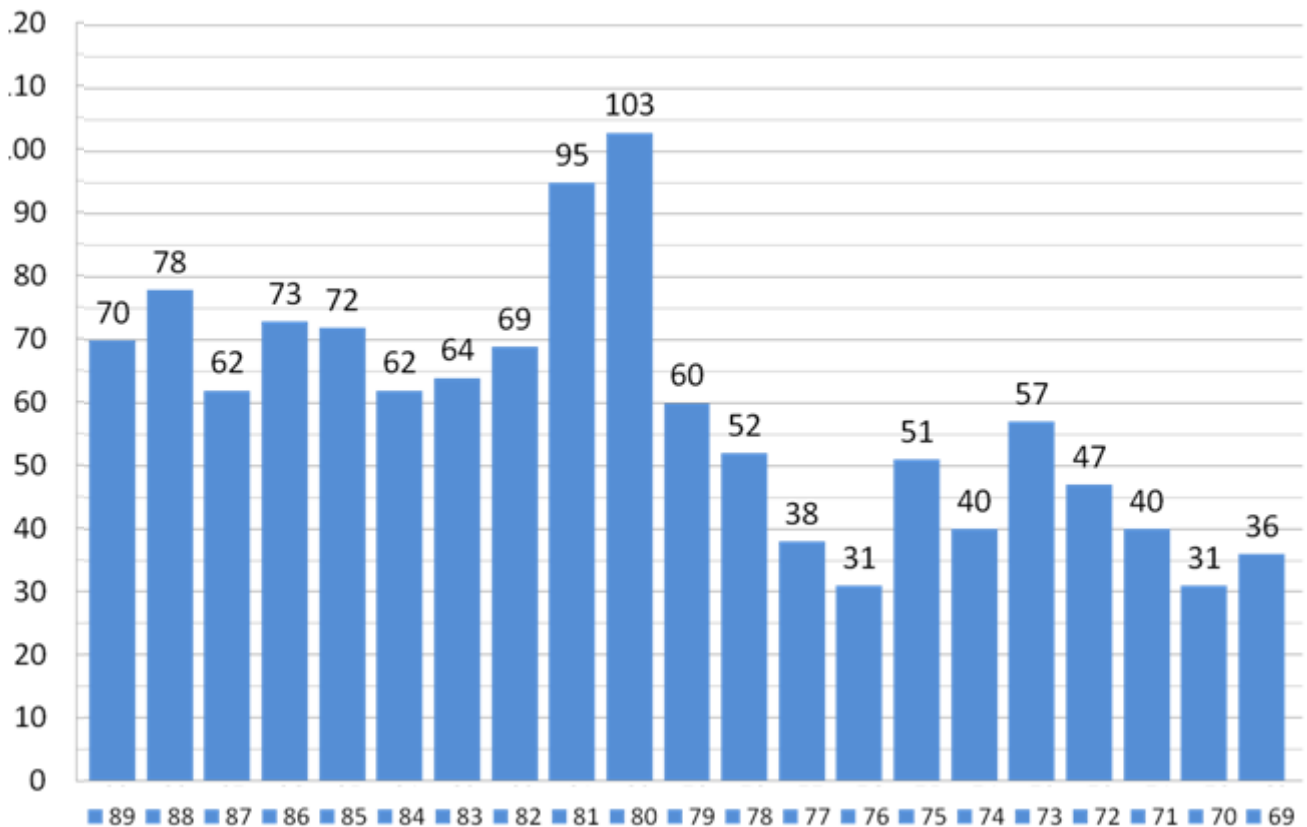
# CRIME SNAPSHOT

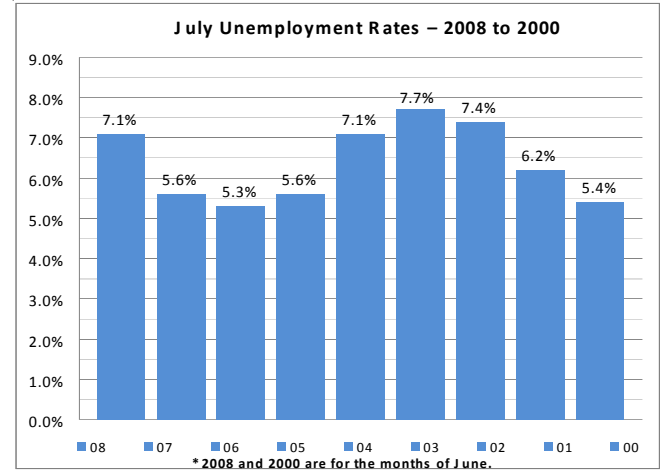
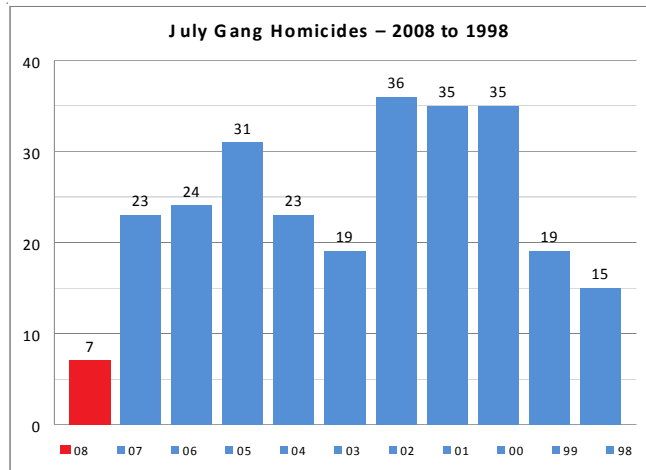
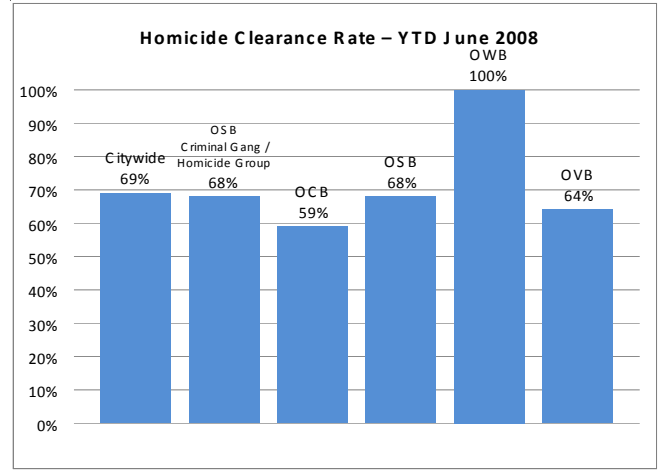
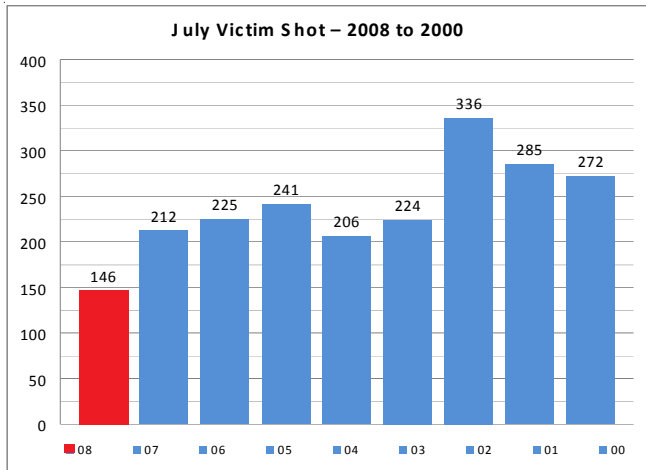
AUGUST 5, 2008

**July Homicides – 2008 to 1990**  
**2008 July Homicides lowest since March 1970 (18 Homicides)**

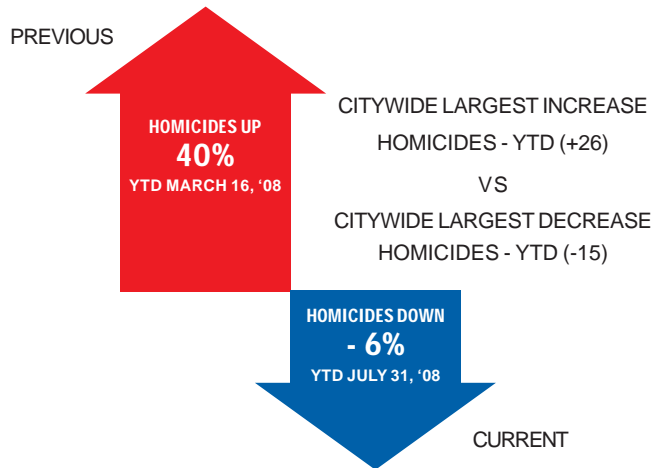


**July Homicides – 1989 to 1969**  
**2008 July Homicides lowest since March 1970 (18 Homicides)**





Source: Employment Development Dept. of Labor Market Information Division



HISTORICAL DATA			
	CHIEFS	NO. OF OFFICERS	POPULATION
1970	Chief Edward M. Davis	6,806	2,949,500
2008	Chief William J. Bratton	9,729	4,220,260

NATIONWIDE HOMICIDE COMPARISON			
CITY	2008	2007	% of CHANGE
LOS ANGELES	219	230	- 4.78
NEW YORK	298	286	+ 4.20
PHILADELPHIA	188	248	- 24.19
CHICAGO	286	246	+ 16.15

# LOS ANGELES POLICE DEPARTMENT CRIME STATISTICS SNAPSHOT

Part I - Crime Week Ending 08/02/08

Gang Crime - Week Ending 7/26/08

Chief William Bratton

## PART I CRIME

Violent Crime	2008 vs. 2007	
	YTD	YTD
Homicide	-5.2%	-12
Rape	-14.8%	-78
Robbery	-6.7%	-537
Aggravated Assault	-6.3%	-486
<b>Total Violent Crime</b>	<b>-6.8%</b>	<b>-1,113</b>

Property Crime	2008 vs. 2007	
	YTD	YTD
Burglary	-5.5%	-634
Grand Theft Auto	-7.9%	-1,105
Burg. Theft from Vehicle	-5.0%	-920
Personal/Other Theft	-4.1%	-659
<b>Total Property Crime</b>	<b>-5.5%</b>	<b>-3,318</b>

TOTAL PART I Crime	2008 vs. 2007	
	YTD	YTD
	<b>-5.8%</b>	<b>-4,431</b>

## GANG-RELATED CRIME

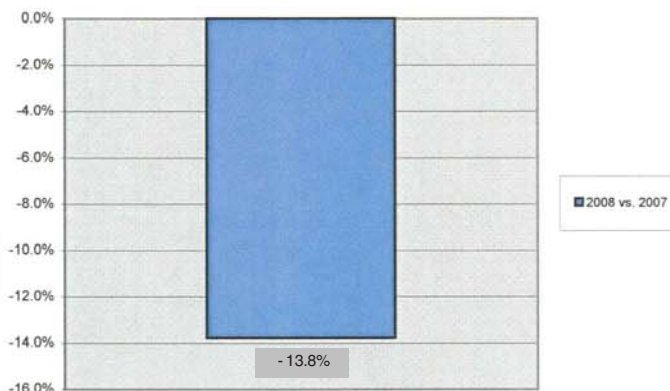
Crime Category	2008 vs. 2007	
	YTD	YTD
Homicide	-17.6%	-23
Aggravated Assault	-15.5%	-298
Attack on Police Officer	-25.0%	-15
Rape	-26.9%	-7
Robbery	-10.1%	-157
Carjacking	-38.0%	-41
Kidnap	0.0%	0
Shots at Inhab. Dwelling	-24.1%	-21
Arson	-60.0%	-3
Criminal Threats	-5.1%	-24
Extortion	-66.7%	-20

TOTAL GANG CRIME	2008 vs. 2007	
	YTD	YTD
	<b>-13.8%</b>	<b>-609</b>

### PART I CRIME



### TOTAL GANG-RELATED CRIME



## SHOOTINGS

Shootings	2008 vs. 2007	
	YTD	YTD
Shots Fired	-27.7%	-791
Victims Shot	-18.7%	-221

TOTAL PART I CRIME by BUREAU	2008 vs. 2007	
	YTD	YTD
Central	-1.6%	-279
South	-6.6%	-1,150
Valley	-5.2%	-1,302
West	-10.1%	-1,700

## SHOOTINGS

Gang-Related Shootings	2008 vs. 2007	
	YTD	YTD
Shots Fired	-33.6%	-501
Victims Shot	-21.2%	-171

TOTAL GANG CRIME by BUREAU	2008 vs. 2007	
	YTD	YTD
Central	-7.9%	-128
South	-12.6%	-189
Valley	-20.2%	-171
West	-27.3%	-121